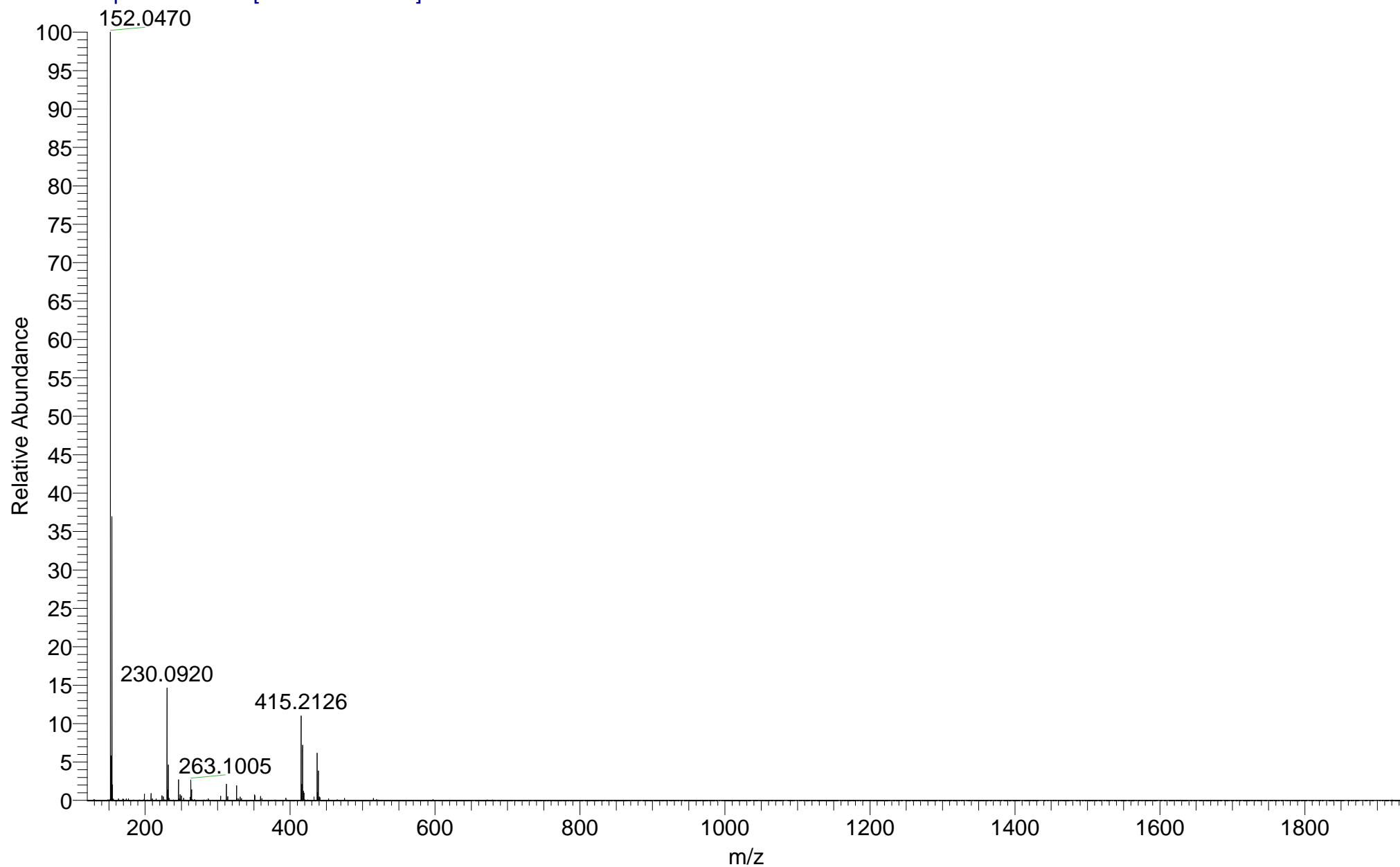


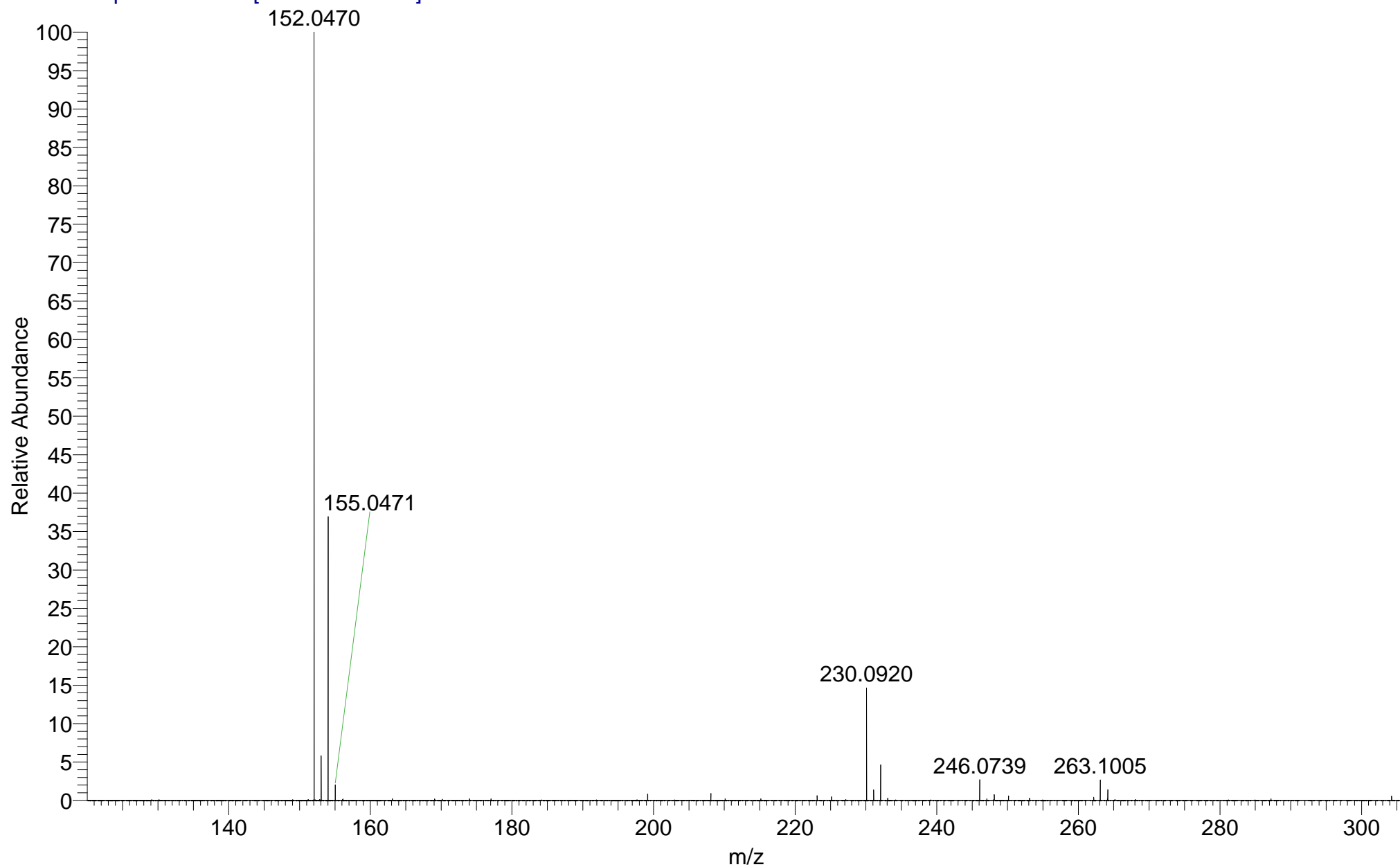
IMPBUL_AXA9V_32455 #45-59 RT: 0.72-1.05 AV: 13 SM: 7G NL: 2.73E7

T: FTMS + p NSI Full ms [120.00-1935.00]



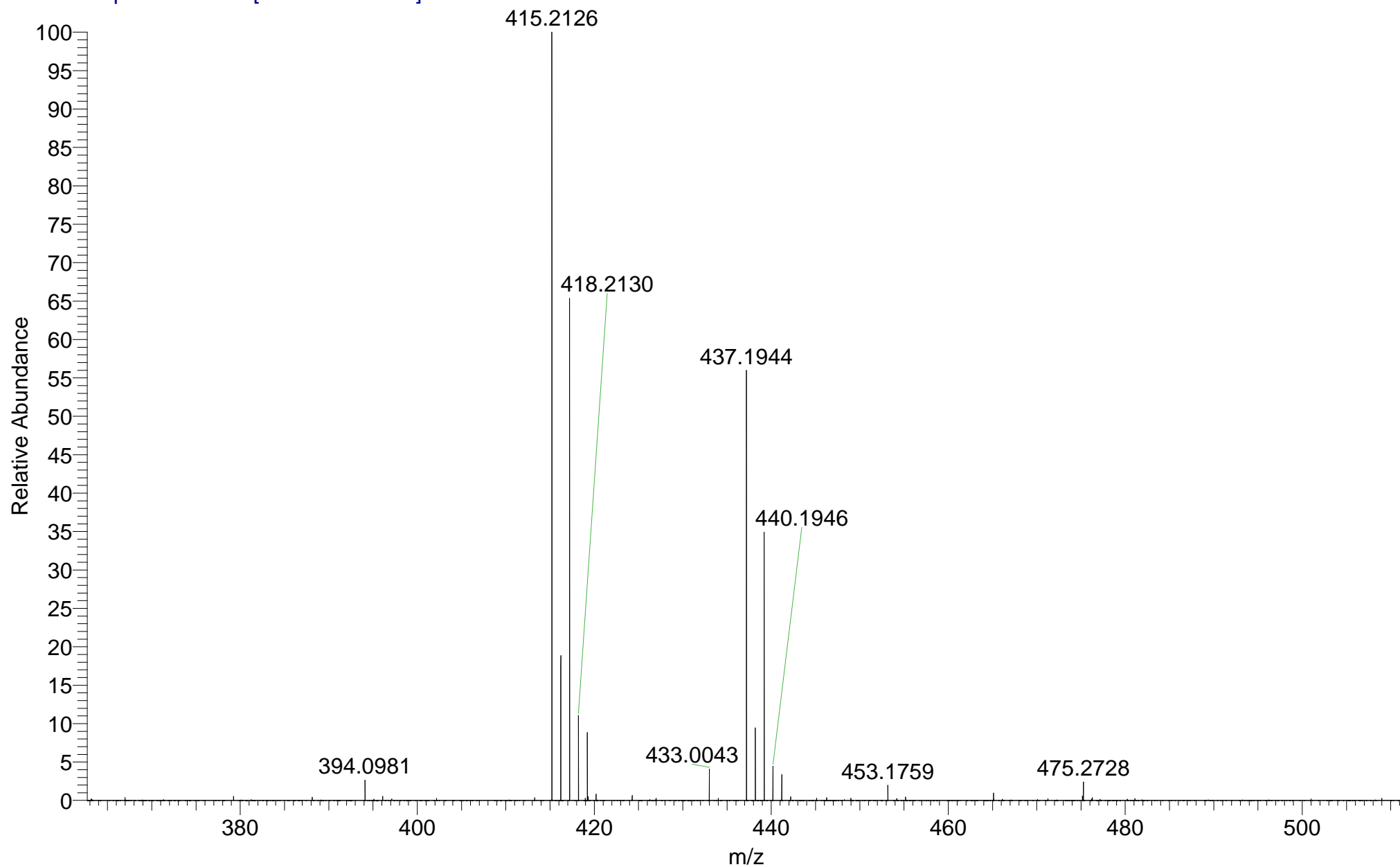
IMPBUL_AXA9V_32455 #45-59 RT: 0.72-1.05 AV: 13 SM: 7G NL: 2.73E7

T: FTMS + p NSI Full ms [120.00-1935.00]

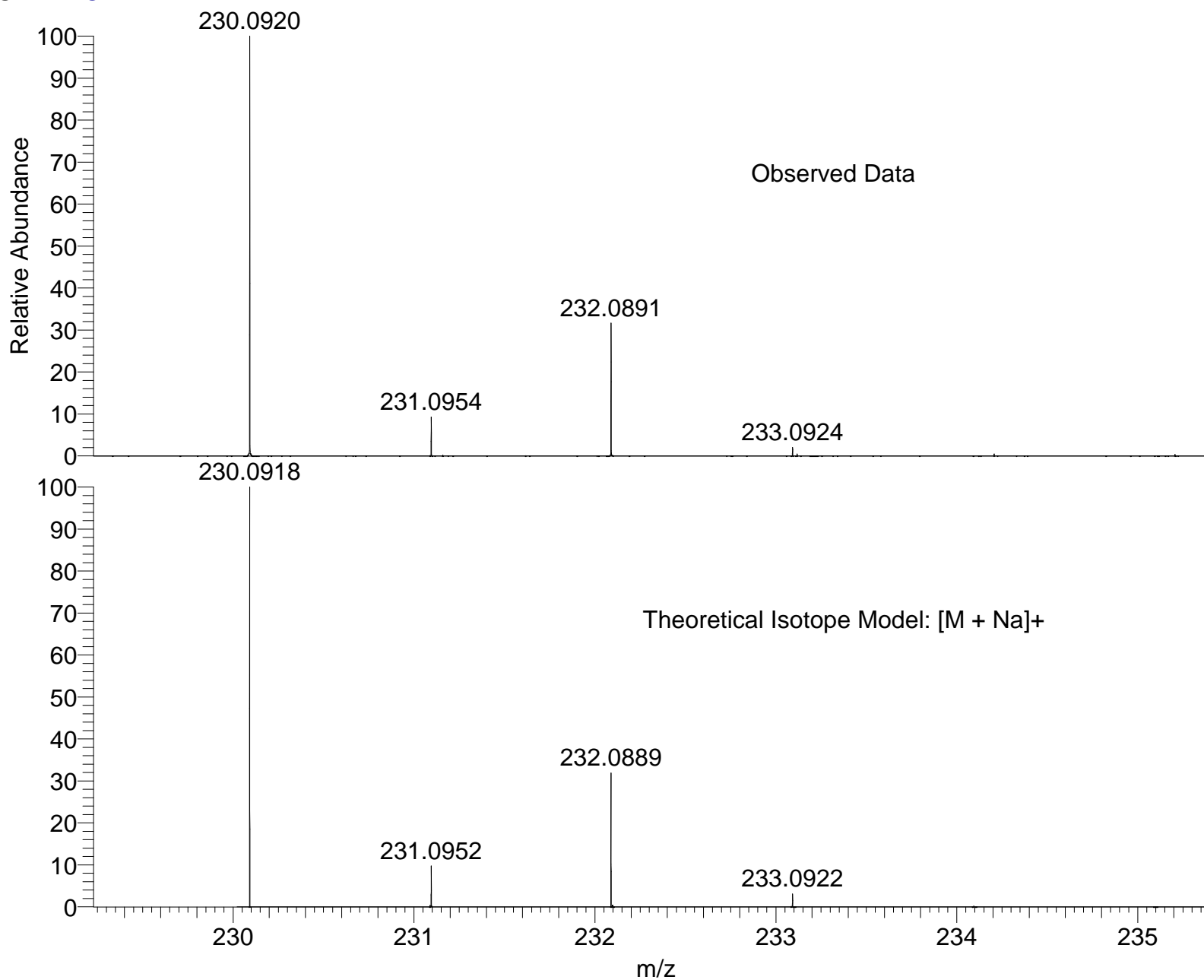


IMPBUL_AXA9V_32455 #45-59 RT: 0.72-1.05 AV: 13 SM: 7G NL: 3.01E6

T: FTMS + p NSI Full ms [120.00-1935.00]



SM: 7G



NL:
4.00E6
IMPBUL_AXA9V_32455#45-
59 RT: 0.72-1.05 AV: 13 T:
FTMS + p NSI Full ms
[120.00-1935.00]

NL:
3.32E4
C₉H₁₈ClNO₂Na:
C₉H₁₈Cl₁N₁O₂Na₁
p (gss, s /p:40) Chrg 1
R: 100000 Res .Pwr . @10%

Isotope: Min. .. Max.
 14 N 0....15
 16 O 0....15
 12 C 0....60
 1 H 0....70
 23 Na 0....1
 35 Cl 0....2
 Tolerance Window: +- 5.00 ppm
 Db/Ring Equiv: -3.. 100
 Fits: 300

N-Rule: Do not use
 Charge: 1

Mass	Theoretical Mass	Delta [ppm]	RDB	Composition
230.0920	230.0918	0.7	0.5	C ₉ H ₁₈ O ₂ N ₁ Cl ₁ Na ₁
	230.0924	-1.8	8.5	C ₁₂ H ₁₂ O ₂ N ₃
	230.0916	1.9	-1.0	C ₈ H ₁₉ O ₅ Cl ₁
	230.0915	2.0	4.5	C ₇ H ₁₃ N ₇ Cl ₁
	230.0913	2.9	5.0	C ₁₂ H ₁₅ O ₃ Na ₁
	230.0929	-3.9	4.0	C ₉ H ₁₅ O ₁ N ₄ Cl ₁
	230.0911	4.1	9.0	C ₁₀ H ₁₀ O ₁ N ₆